

A20022

Leader in Biomolecular Solutions for Life Science



# SARS-CoV-2 Spike S1 mAb, BSA and glycerol free

Catalog No.: A20022

6 Publications

## Basic Information

### Observed MW

110kDa

### Calculated MW

### Category

SMab Recombinant Monoclonal Antibody

### Applications

WB,IF/ICC,FC,ELISA

### Cross-Reactivity

SARS-CoV-2

### CloneNo number

ARC2373

## Background

Severe acute respiratory syndrome coronavirus 2 (SARS-CoV-2) is an enveloped, positive-sense, single-stranded RNA virus that causes coronavirus disease 2019 (COVID-19). Virus particles include the RNA genetic material and structural proteins needed for invasion of host cells. Once inside the cell the infecting RNA is used to encode structural proteins that make up virus particles, nonstructural proteins that direct virus assembly, transcription, replication and host control and accessory proteins whose function has not been determined.~ The structural proteins of SARS-CoV-2 include the envelope protein (E), spike or surface glycoprotein (S), membrane protein (M) and the nucleocapsid protein (N). The spike glycoprotein is found on the outside of the virus particle and gives coronavirus viruses their crown-like appearance. This glycoprotein mediates attachment of the virus particle and entry into the host cell. S protein is an important target for vaccine development, antibody therapies and diagnostic antigen-based tests.

## Recommended Dilutions

<b>ELISA</b>	1:1000 - 1:5000
<b>WB</b>	1:2000 - 1:10000
<b>FC</b>	1:50 - 1:200
<b>IF/ICC</b>	1:50 - 1:200

## Immunogen Information

### Gene ID

43740568

### Swiss Prot

### Immunogen

Recombinant fusion protein of SARS-CoV-2 Spike S1.

### Synonyms

spike glycoprotein

## Contact



[www.abclonal.com](http://www.abclonal.com)

## Product Information

### Source

Rabbit

### Isotype

IgG

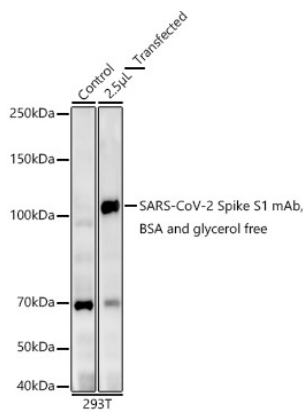
### Purification

Affinity purification

### Storage

Store at 4°C Avoid freeze / thaw cycles.  
Buffer: PBS with 0.05% proclin300,pH7.3.

## Validation Data



Western blot analysis of lysates from control 293T and SARS-CoV-2 Spike S1-293T transfected cells, using SARS-CoV-2 Spike S1 mAb, BSA and glycerol free (A20022) at 1:10000 dilution.  
Secondary antibody: HRP Goat Anti-Rabbit IgG (H+L) (AS014) at 1:10000 dilution.  
Lysates/proteins: 25µg per lane.  
Blocking buffer: 3% nonfat dry milk in TBST.  
Detection: ECL Enhanced Kit (RM00021).  
Exposure time: 180s.