

A23123

Leader in Biomolecular Solutions for Life Science



COX1 Rabbit mAb

Catalog No.: A23123

Recombinant

Basic Information

Observed MW

37kDa

Calculated MW

57kDa

Category

SMab Recombinant Monoclonal
Antibody

Applications

WB,IHC-P,IF/ICC,ELISA

Cross-Reactivity

Human,Mouse,Rat

CloneNo number

ARC59830

Background

Enables cytochrome-c oxidase activity. Predicted to be involved in electron transport coupled proton transport; mitochondrial electron transport, cytochrome c to oxygen; and response to oxidative stress. Located in mitochondrial inner membrane. Part of mitochondrial respiratory chain complex IV. Is expressed in several structures, including brown fat; heart; liver; metanephros; and skeletal muscle. Orthologous to human MT-CO1 (mitochondrially encoded cytochrome c oxidase I).

Recommended Dilutions

WB 1:500 - 1:1000

IHC-P 1:50 - 1:200

IF/ICC 1:50 - 1:200

Immunogen Information

Gene ID

17708

Swiss Prot

P00397

Immunogen

A synthetic peptide corresponding to a sequence within amino acids 414-514 of human COX1. (NP_904330.1).

Synonyms

CoxI; COX1

Contact



www.abclonal.com

Product Information

Source

Rabbit

Isotype

IgG

Purification

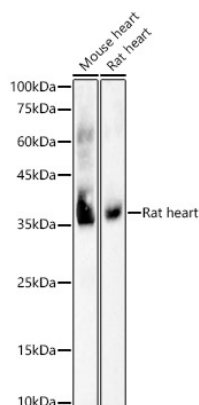
Affinity purification

Storage

Store at -20°C. Avoid freeze / thaw cycles.

Buffer: PBS with 0.05% proclin300,0.05% BSA,50% glycerol,pH7.3.

Validation Data



Western blot analysis of various lysates, using COX1 Rabbit mAb (A23123) at 1:1000 dilution.

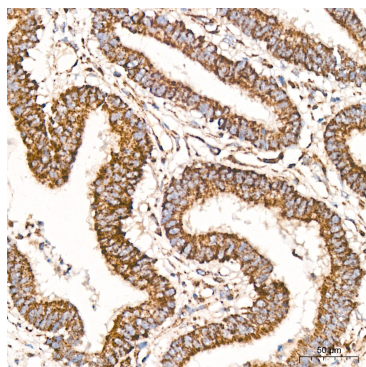
Secondary antibody: HRP Goat Anti-Rabbit IgG (H+L) (AS014) at 1:10000 dilution.

Lysates/proteins: 25µg per lane.

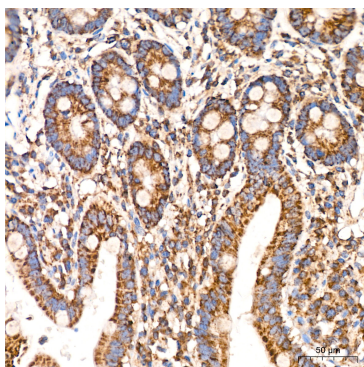
Blocking buffer: 3% nonfat dry milk in TBST.

Detection: ECL Basic Kit (RM00020).

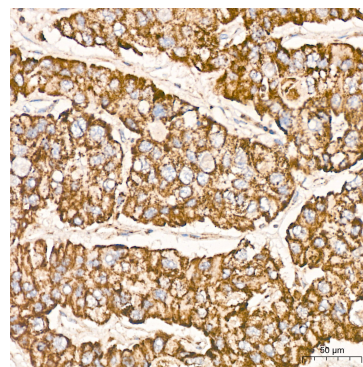
Exposure time: 1s.



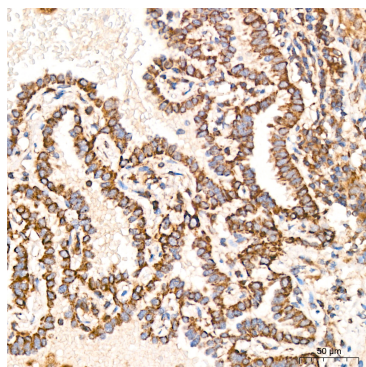
Immunohistochemistry analysis of paraffin-embedded Human colon carcinoma tissue using COX1 Rabbit mAb (A23123) at a dilution of 1:200 (40x lens). High pressure antigen retrieval performed with 0.01M Citrate Bufferr (pH 6.0) prior to IHC staining.



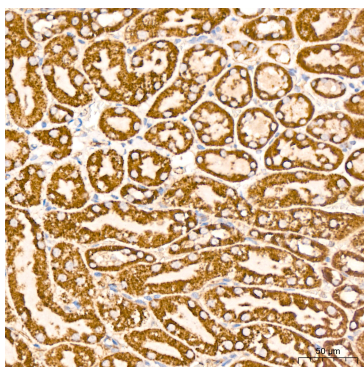
Immunohistochemistry analysis of paraffin-embedded Human colon tissue using COX1 Rabbit mAb (A23123) at a dilution of 1:200 (40x lens). High pressure antigen retrieval performed with 0.01M Citrate Bufferr (pH 6.0) prior to IHC staining.



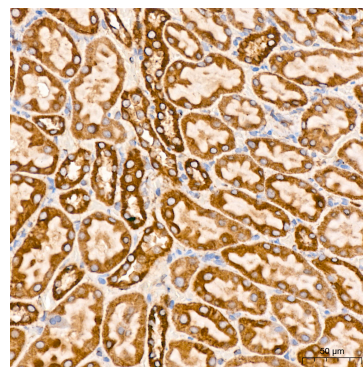
Immunohistochemistry analysis of paraffin-embedded Human liver cancer tissue using COX1 Rabbit mAb (A23123) at a dilution of 1:200 (40x lens). High pressure antigen retrieval performed with 0.01M Citrate Bufferr (pH 6.0) prior to IHC staining.



Immunohistochemistry analysis of paraffin-embedded Human lung adenocarcinoma tissue using COX1 Rabbit mAb (A23123) at a dilution of 1:200 (40x lens). High pressure antigen retrieval performed with 0.01M Citrate Bufferr (pH 6.0) prior to IHC staining.

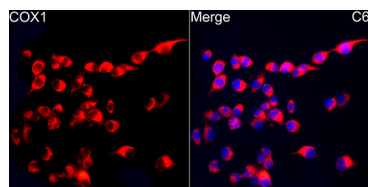


Immunohistochemistry analysis of paraffin-embedded Mouse kidney tissue using COX1 Rabbit mAb (A23123) at a dilution of 1:200 (40x lens). High pressure antigen retrieval performed with 0.01M Citrate Bufferr (pH 6.0) prior to IHC staining.

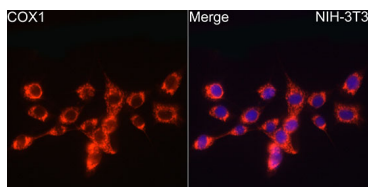


Immunohistochemistry analysis of paraffin-embedded Rat kidney tissue using COX1 Rabbit mAb (A23123) at a dilution of 1:200 (40x lens). High pressure antigen retrieval performed with 0.01M Citrate Bufferr (pH 6.0) prior to IHC staining.

Validation Data



Immunofluorescence analysis of C6 cells using COX1 Rabbit mAb (A23123) at dilution of 1:100 (40x lens). Secondary antibody: Cy3 Goat Anti-Rabbit IgG (H+L) (AS007) at 1:500 dilution. Blue: DAPI for nuclear staining.



Immunofluorescence analysis of NIH/3T3 cells using COX1 Rabbit mAb (A23123) at dilution of 1:100 (40x lens). Secondary antibody: Cy3 Goat Anti-Rabbit IgG (H+L) (AS007) at 1:500 dilution. Blue: DAPI for nuclear staining.