

A11458

Leader in Biomolecular Solutions for Life Science



# MLKL Rabbit pAb

Catalog No.: A11458

## Basic Information

---

### Observed MW

Refer to figures

### Calculated MW

54kDa

### Category

Polyclonal Antibody

### Applications

IF/ICC,ELISA

### Cross-Reactivity

Human

## Background

---

This gene belongs to the protein kinase superfamily. The encoded protein contains a protein kinase-like domain; however, is thought to be inactive because it lacks several residues required for activity. This protein plays a critical role in tumor necrosis factor (TNF)-induced necroptosis, a programmed cell death process, via interaction with receptor-interacting protein 3 (RIP3), which is a key signaling molecule in necroptosis pathway. Inhibitor studies and knockdown of this gene inhibited TNF-induced necrosis. High levels of this protein and RIP3 are associated with inflammatory bowel disease in children. Alternatively spliced transcript variants have been described for this gene.

## Recommended Dilutions

---

IF/ICC 1:50 - 1:200

## Immunogen Information

---

### Gene ID

74568

### Swiss Prot

Q8NB16

### Immunogen

Recombinant fusion protein containing a sequence corresponding to amino acids 1-53 of mouse MLKL (Q9D2Y4).

### Synonyms

hMLKL; MLKL

## Contact

---



[www.abclonal.com](http://www.abclonal.com)

## Product Information

---

### Source

Rabbit

### Isotype

IgG

### Purification

Affinity purification

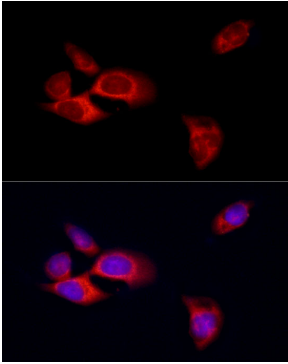
### Storage

Store at -20°C. Avoid freeze / thaw cycles.

Buffer: PBS with 0.02% sodium azide,50% glycerol,pH7.3.

## Validation Data

---



Immunofluorescence analysis of HeLa cells using MLKL Rabbit pAb (A11458) at dilution of 1:100 (40x lens). Secondary antibody: Cy3 Goat Anti-Rabbit IgG (H+L) (AS007) at 1:500 dilution. Blue: DAPI for nuclear staining.