

A5820

Leader in Biomolecular Solutions for Life Science



# PTPIP51/RMDN3 Rabbit pAb

Catalog No.: A5820 **2 Publications**

## Basic Information

### Observed MW

60kDa

### Calculated MW

52kDa

### Category

Polyclonal Antibody

### Applications

WB,IHC-P,IF/ICC,ELISA

### Cross-Reactivity

Human,Mouse,Rat

## Background

Enables microtubule binding activity. Involved in cellular calcium ion homeostasis. Located in several cellular components, including intercellular bridge; mitochondrial outer membrane; and spindle.

## Recommended Dilutions

<b>WB</b>	1:500 - 1:2000
<b>IHC-P</b>	1:50 - 1:200
<b>IF/ICC</b>	1:50 - 1:200

## Immunogen Information

<b>Gene ID</b>	<b>Swiss Prot</b>
55177	Q96TC7

### Immunogen

Recombinant fusion protein containing a sequence corresponding to amino acids 171-470 of human PTPIP51/RMDN3 (NP\_060615.1).

### Synonyms

RMD3; RMD-3; FAM82C; FAM82A2; ptpip51; PTPIP51/RMDN3

## Contact

 [www.abclonal.com](http://www.abclonal.com)

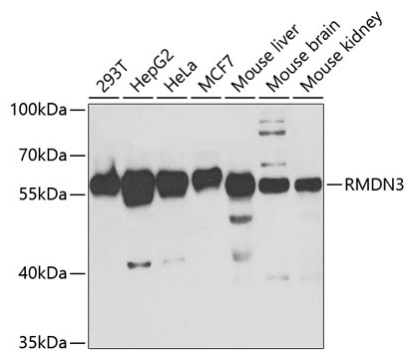
## Product Information

<b>Source</b>	<b>Isotype</b>	<b>Purification</b>
Rabbit	IgG	Affinity purification

### Storage

Store at -20°C. Avoid freeze / thaw cycles.  
Buffer: PBS with 0.01% thimerosal, 50% glycerol, pH7.3.

## Validation Data



Western blot analysis of various lysates using PTPIP51/RMDN3 Rabbit pAb (A5820) at 1:1000 dilution.

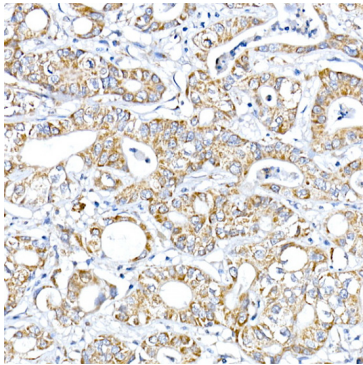
Secondary antibody: HRP Goat Anti-Rabbit IgG (H+L) (AS014) at 1:10000 dilution.

Lysates/proteins: 25µg per lane.

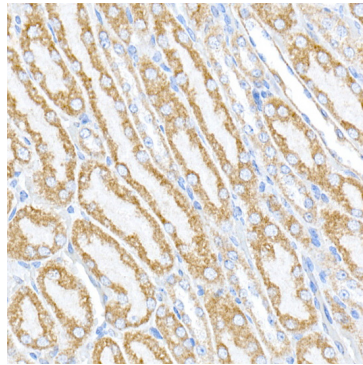
Blocking buffer: 3% nonfat dry milk in TBST.

Detection: ECL Basic Kit (RM00020).

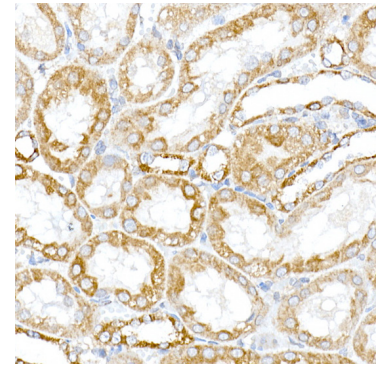
Exposure time: 90s.



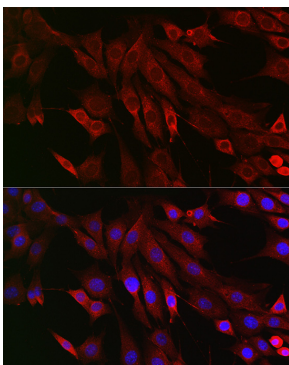
Immunohistochemistry analysis of paraffin-embedded Human liver cancer using PTPIP51/RMDN3 Rabbit pAb (A5820) at dilution of 1:100 (40x lens). Perform high pressure antigen retrieval with 10 mM citrate buffer pH 6.0 before commencing with IHC staining protocol.



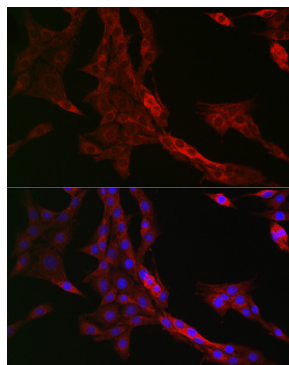
Immunohistochemistry analysis of paraffin-embedded Mouse kidney using PTPIP51/RMDN3 Rabbit pAb (A5820) at dilution of 1:100 (40x lens). Perform high pressure antigen retrieval with 10 mM citrate buffer pH 6.0 before commencing with IHC staining protocol.



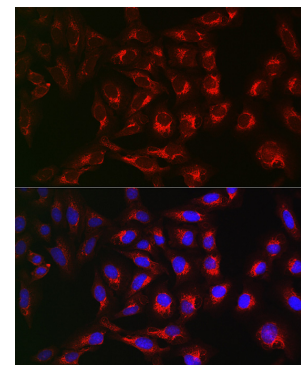
Immunohistochemistry analysis of paraffin-embedded Rat kidney using PTPIP51/RMDN3 Rabbit pAb (A5820) at dilution of 1:100 (40x lens). Perform high pressure antigen retrieval with 10 mM citrate buffer pH 6.0 before commencing with IHC staining protocol.



Immunofluorescence analysis of NIH/3T3 cells using PTPIP51/RMDN3 Rabbit pAb (A5820) at dilution of 1:200 (40x lens). Secondary antibody: Cy3 Goat Anti-Rabbit IgG (H+L) (AS007) at 1:500 dilution. Blue: DAPI for nuclear staining.



Immunofluorescence analysis of PC-12 cells using PTPIP51/RMDN3 Rabbit pAb (A5820) at dilution of 1:200 (40x lens). Secondary antibody: Cy3 Goat Anti-Rabbit IgG (H+L) (AS007) at 1:500 dilution. Blue: DAPI for nuclear staining.



Immunofluorescence analysis of U2OS cells using PTPIP51/RMDN3 Rabbit pAb (A5820) at dilution of 1:200 (40x lens). Secondary antibody: Cy3 Goat Anti-Rabbit IgG (H+L) (AS007) at 1:500 dilution. Blue: DAPI for nuclear staining.