

A10102

Leader in Biomolecular Solutions for Life Science



# RPRD1B Rabbit pAb

Catalog No.: A10102

## Basic Information

---

### Observed MW

37kDa

### Calculated MW

37kDa

### Category

Polyclonal Antibody

### Applications

WB,IHC-P,ELISA

### Cross-Reactivity

Human,Mouse,Rat

## Background

---

Enables RNA polymerase II complex binding activity and identical protein binding activity. Involved in positive regulation of cell population proliferation; regulation of cell cycle process; and regulation of transcription by RNA polymerase II. Located in nucleoplasm. Part of RNA polymerase II, holoenzyme.

## Recommended Dilutions

---

<b>WB</b>	1:500 - 1:2000
<b>IHC-P</b>	1:100 - 1:200

## Immunogen Information

---

### Gene ID

58490

### Swiss Prot

Q9NQG5

### Immunogen

Recombinant fusion protein containing a sequence corresponding to amino acids 80-326 of human rprd1b (Q9NQG5).

### Synonyms

K-H; CREPT; NET60; C20orf77; Kub5-Hera; dj1057B20.2; RPRD1B

## Contact

---



[www.abclonal.com](http://www.abclonal.com)

## Product Information

---

### Source

Rabbit

### Isotype

IgG

### Purification

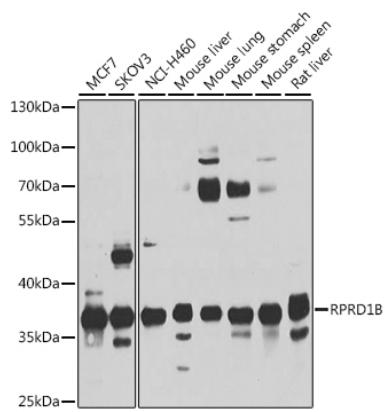
Affinity purification

### Storage

Store at -20°C. Avoid freeze / thaw cycles.

Buffer: PBS with 0.02% sodium azide,50% glycerol,pH7.3.

## Validation Data



Western blot analysis of extracts of various cell lines, using rprd1b antibody (A10102) at 1:1000 dilution.  
Secondary antibody: HRP Goat Anti-Rabbit IgG (H+L) (AS014) at 1:10000 dilution.  
Lysates/proteins: 25 $\mu$ g per lane.  
Blocking buffer: 3% nonfat dry milk in TBST.  
Detection: ECL Basic Kit (RM00020).  
Exposure time: 15s.