

A6824

Leader in Biomolecular Solutions for Life Science



## DCP1A Rabbit mAb

Catalog No.: A6824 **Recombinant** **1 Publications**

### Basic Information

#### Observed MW

73kDa

#### Calculated MW

63kDa

#### Category

SMab Recombinant Monoclonal Antibody

#### Applications

WB,IHC-P,IF/ICC,ELISA

#### Cross-Reactivity

Human,Mouse

#### CloneNo number

ARC1421

### Background

Decapping is a key step in general and regulated mRNA decay. The protein encoded by this gene is a decapping enzyme. This protein and another decapping enzyme form a decapping complex, which interacts with the nonsense-mediated decay factor hUpf1 and may be recruited to mRNAs containing premature termination codons. This protein also participates in the TGF-beta signaling pathway. Alternative splicing of this gene results in multiple transcript variants.

### Recommended Dilutions

WB	1:500 - 1:2000
IHC-P	1:50 - 1:200
IF/ICC	1:50 - 1:200

### Immunogen Information

#### Gene ID

55802

#### Swiss Prot

Q9NPI6

#### Immunogen

A synthetic peptide corresponding to a sequence within amino acids 483-582 of human DCP1A (Q9NPI6).

#### Synonyms

SMIF; SMAD4IP1; HSA275986; Nbla00360; DCP1A

### Contact



[www.abclonal.com](http://www.abclonal.com)

### Product Information

#### Source

Rabbit

#### Isotype

IgG

#### Purification

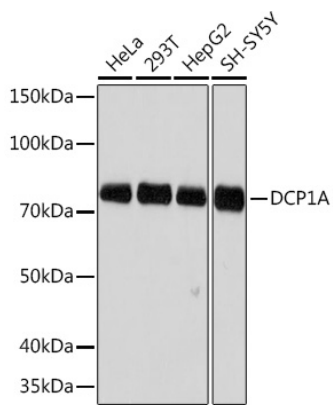
Affinity purification

#### Storage

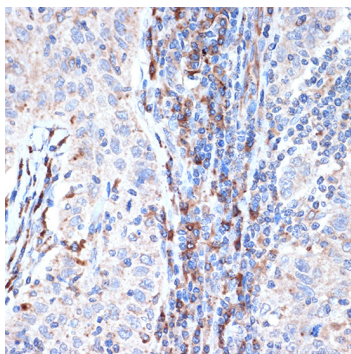
Store at -20°C. Avoid freeze / thaw cycles.

Buffer: PBS with 0.02% sodium azide,0.05% BSA,50% glycerol,pH7.3.

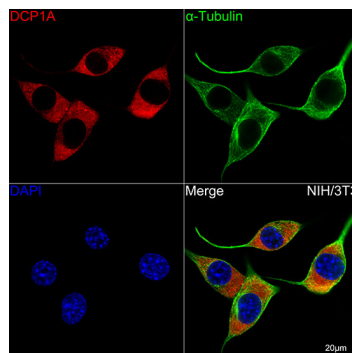
## Validation Data



Western blot analysis of extracts of various cell lines, using DCP1A Rabbit mAb (A6824) at 1:500 dilution. Secondary antibody: HRP Goat Anti-Rabbit IgG (H+L) (AS014) at 1:10000 dilution. Lysates/proteins: 25µg per lane. Blocking buffer: 3% nonfat dry milk in TBST. Detection: ECL Basic Kit (RM00020). Exposure time: 3min.



Immunohistochemistry analysis of paraffin-embedded human esophageal cancer using DCP1A Rabbit mAb (A6824) at dilution of 1:100 (40x lens). Perform microwave antigen retrieval with 10 mM Tris/EDTA buffer pH 9.0 before commencing with IHC staining protocol.



Confocal imaging of NIH/3T3 cells using DCP1A Rabbit mAb (A6824, at dilution of 1:100) (Red). The cells were counterstained with  $\alpha$ -Tubulin Mouse mAb (AC012, dilution 1:400) (Green). DAPI was used for nuclear staining (blue). Objective: 100x.