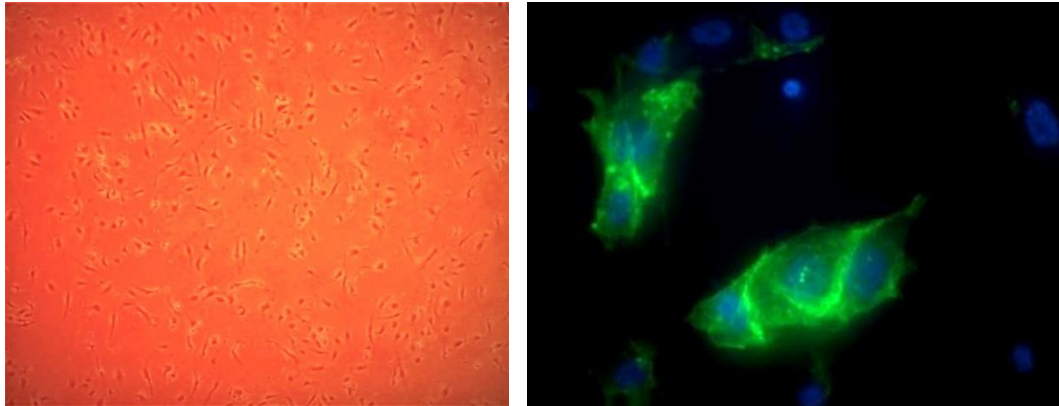


## Primary Human Coronary Artery Endothelial Cells

Cat # NB-11-0017A size:  $1 \times 10^6$  cells/ml (frozen)



### Description

These antibody-free human primary cells were initiated from normal human coronary artery without the use of positive selection of antibodies.

### Product Information

Increase Biological Relevance with Human Primary Cells

Our antibody-free primary cells can offer a more biologically relevant cell culture tool for scientists to enhance their research insights. These primary cells were originated using Neo Biotech Complete Serum-Free Medium (NB-11-0061) and subsequently grown and passaged in Neo Biotech Complete Classic Medium (NB-11-0046). The cells are cryopreserved in Neo Biotech Cell Freezing Medium (NB-11-0075).

- Isolated from normal, healthy donor tissue
- Available at Passage 3 (<12 cumulative population doublings)
- Each vial contains approximately  $1 \times 10^6$  cells
- Each vial will initiate a Passage 4 cell culture in a 75 cm<sup>2</sup> flask
- Available in reserved lots to enhance consistency in your research program
- Each vial of cells is shipped to customers with 1mL of Bac-Off® and 0.25mL of CultureBoost™.

**Storage Instruction:** Neo Biotech ships frozen cells on Dry Ice. On receipt, immediately transfer frozen cells to liquid nitrogen (-180 °C) until ready for experimental use. Live cell shipment is also available on request.

Never can primary cells be kept at -20 °C.

## Tests

### Standard Tests

| TESTS   | RESULTS  |
|---|----------|
| HIV Serologic Test (donor level HIV AB EIA)                             | Negative |
| HIV PCR Test (frozen cell pool by CLIA Licensed Clinical Lab)           | Negative |
| Hepatitis B (HBV) and Hepatitis C (HCV) PCR Test (at frozen cell level) | Negative |

### Retail Production (P3) Tests

| TESTS  | RESULTS |
|--|---------|
| Bacterial Sterility (culture method) by independent lab  | Pass    |
| Fungal Sterility (culture method) by independent lab     | Pass    |
| Mycoplasma Sterility (culture method) by independent lab | Pass    |

### Cell Markers and Functional Tests

| TESTS                                       | RESULT                               |
|---|--------------------------------------|
| Inducible expression of CD 62E (E-Selectin) | > 90% positive by immunofluorescence |
| Cytoplasmic VWF / Factor VIII               | > 95% positive by immunofluorescence |
| Cytoplasmic uptake of Di-I-Ac-LDL           | > 95% positive by immunofluorescence |

For reference only

***For reference only  
For Research Use Only. Not for Diagnostic or Therapeutic Use.***