

A7414

Leader in Biomolecular Solutions for Life Science



# RIPK1/RIP Rabbit pAb

Catalog No.: A7414 **35 Publications**

## Basic Information

### Observed MW

75kDa/38kDa

### Calculated MW

76kDa

### Category

Polyclonal Antibody

### Applications

WB,IHC-P,IF/ICC,IP,ELISA

### Cross-Reactivity

Human,Mouse,Rat

## Background

This gene encodes a member of the receptor-interacting protein (RIP) family of serine/threonine protein kinases. The encoded protein plays a role in inflammation and cell death in response to tissue damage, pathogen recognition, and as part of developmental regulation. RIPK1/RIPK3 kinase-mediated necrosis is referred to as necroptosis. Genetic disruption of this gene in mice results in death shortly after birth.

## Recommended Dilutions

<b>WB</b>	1:500 - 1:1000
<b>IHC-P</b>	1:50 - 1:200
<b>IF/ICC</b>	1:50 - 1:200
<b>IP</b>	0.5µg-4µg antibody for 200µg-400µg extracts of whole cells

## Immunogen Information

### Gene ID

8737

### Swiss Prot

Q13546

### Immunogen

A synthetic peptide corresponding to a sequence within amino acids 100-200 of human RIPK1/RIP (NP\_003795.2).

### Synonyms

RIP; RIP1; AIEFL; IMD57; RIP-1; RIPK1/RIP

## Contact

 [www.abclonal.com](http://www.abclonal.com)

## Product Information

### Source

Rabbit

### Isotype

IgG

### Purification

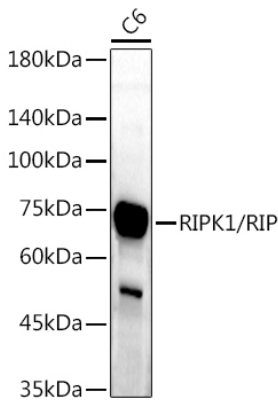
Affinity purification

### Storage

Store at -20°C. Avoid freeze / thaw cycles.

Buffer: PBS with 0.05% proclin300,50% glycerol,pH7.3.

## Validation Data



Western blot analysis of lysates from C6 cells, using RIPK1/RIP Rabbit pAb (A7414) at 1:1000 dilution.

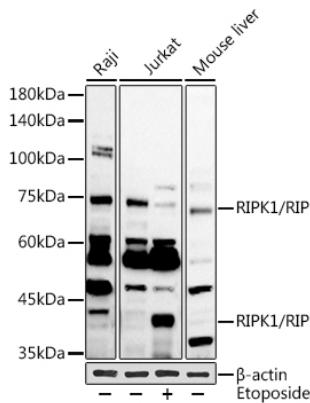
Secondary antibody: HRP Goat Anti-Rabbit IgG (H+L) (AS014) at 1:10000 dilution.

Lysates/proteins: 25µg per lane.

Blocking buffer: 3% nonfat dry milk in TBST.

Detection: ECL Enhanced Kit (RM00021).

Exposure time: 180s.



Western blot analysis of various lysates using RIPK1/RIP Rabbit pAb (A7414) at 1:1000 dilution. Jurkat cells were treated by Etoposide (25 µM) at 37°C for 5 hours.

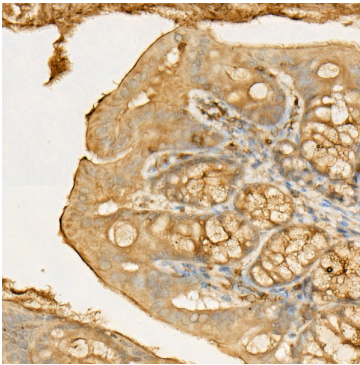
Secondary antibody: HRP Goat Anti-Rabbit IgG (H+L) (AS014) at 1:10000 dilution.

Lysates/proteins: 25µg per lane.

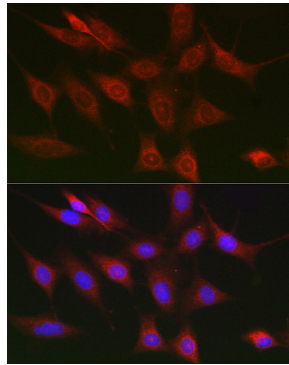
Blocking buffer: 3% nonfat dry milk in TBST.

Detection: ECL Basic Kit (RM00020).

Exposure time: 90s.



Immunohistochemistry analysis of paraffin-embedded Mouse colon using RIPK1/RIP Rabbit pAb (A7414) at dilution of 1:50 (40x lens). Perform high pressure antigen retrieval with 10 mM citrate buffer pH 6.0 before commencing with IHC staining protocol.



Immunofluorescence analysis of NIH/3T3 cells using RIPK1/RIP Rabbit pAb (A7414) at dilution of 1:100 (40x lens). Secondary antibody: Cy3 Goat Anti-Rabbit IgG (H+L) (AS007) at 1:500 dilution. Blue: DAPI for nuclear staining.