

AP0495

Leader in Biomolecular Solutions for Life Science



Phospho-PKC (pan) (β II Ser660) Rabbit pAb

Catalog No.: AP0495

Basic Information

Observed MW

95kDa

Calculated MW

59kDa/67kDa/74- 83kDa

Category

Polyclonal Antibody

Applications

WB,ELISA

Cross-Reactivity

Human,Mouse,Rat

Background

Protein kinase C (PKC) is a family of serine- and threonine-specific protein kinases that can be activated by calcium and the second messenger diacylglycerol. PKC family members phosphorylate a wide variety of protein targets and are known to be involved in diverse cellular signaling pathways. PKC family members also serve as major receptors for phorbol esters, a class of tumor promoters. Each member of the PKC family has a specific expression profile and is believed to play a distinct role in cells. The protein encoded by this gene is one of the PKC family members. This kinase has been reported to play roles in many different cellular processes, such as cell adhesion, cell transformation, cell cycle checkpoint, and cell volume control. Knockout studies in mice suggest that this kinase may be a fundamental regulator of cardiac contractility and Ca(2+) handling in myocytes. [provided by RefSeq, Jul 2008]

Recommended Dilutions

WB 1:500 - 1:2000

Immunogen Information

Gene ID

5578/5579/5580/5581/5583/5588

Swiss Prot

P17252/P05771/Q05655/Q02156/P24723/Q04759

Immunogen

A synthetic phosphorylated peptide around S660 of human PKC (pan) β IIPKCA (NP_002728.2).

Synonyms

PRKCA/PRKCB/PRKCD/PRKCE/PRKCH/PRKCQ; Phospho-PKC (pan) (β II Ser660)

Contact

 www.abclonal.com

Product Information

Source

Rabbit

Isotype

IgG

Purification

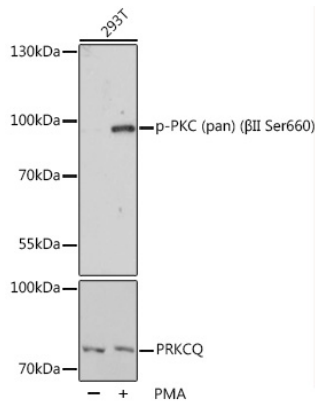
Affinity purification

Storage

Store at -20°C. Avoid freeze / thaw cycles.

Buffer: PBS with 0.02% sodium azide,50% glycerol,pH7.3.

Validation Data



Western blot analysis of lysates from 293T cells, using Phospho-PKC (pan) (β II Ser660) pAb (AP0495) at 1:1000 dilution or PRKCQ antibody (A5834). 293T cells were treated by PMA/TPA (200nM) for 30 minutes after serum-starvation overnight. Secondary antibody: HRP-conjugated Goat anti-Rabbit IgG (H+L) (AS014) at 1:10000 dilution.

Lysates/proteins: 25 μ g per lane.

Blocking buffer: 3% BSA.

Detection: ECL Basic Kit (RM00020).

Exposure time: 90s.