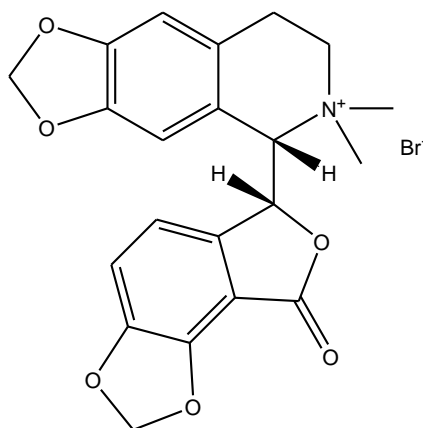


## (-)-Bicuculline methobromide

Cat # NB-48-0002



### Product Information

---

<b>Batch No.:</b>	0110BN/01
<b>Chemical Name:</b>	[S-(R*, S*)]-5-(6,8-Dihydro-8-oxofuro[3,4-e]-1,3-benzodioxol-6-yl)-5,6,7,8-tetrahydro-6,6-dimethyl-1,3-dioxolo[4,5-g]isoquinolinium bromide
<b>Batch Molecular Formula:</b>	C <sub>21</sub> H <sub>20</sub> BrNO <sub>6</sub>
<b>Batch Molecular Weight:</b>	462.29
<b>CAS No.:</b>	[73604-30-5]
<b>Physical Appearance:</b>	White solid
<b>Storage:</b>	RT

### Solvent and solubility

---

Soluble in DMSO or to 25 mM in water (with warming)

### Biological activity

---

Water soluble and more stable methobromide salt of (+)-Bicuculline (Cat. No. NB-48-0987-50MG).

### References

---

1. Seutin and Johnson (1999) *TiPS* 20:268

- For Research use only. Not for human use. -

NB-48-0002 (-)-Bicuculline methobromide

## Analytical data

---

HPLC: corresponds to the reference

MS: corresponds to the reference

Tests: HPLC Assay: > 98% (complies).

- For Research use only. Not for human use. –