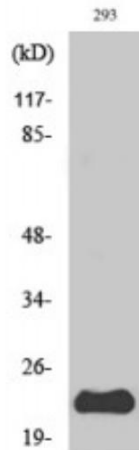


## **PUMA antibody**

**Cat # NB-22-5270 (100 UI)**

**Cat # NB-22-5270-S (20 ul)**



Western Blot (WB) analysis of specific cells using PUMA Polyclonal Antibody

### **Description**

PUMA is a protein encoded by the BBC3 gene which is approximately 26,5 kDa. PUMA is localised to the mitochondrion. It is involved in apoptosis modulation and signalling, activation of BH3-only proteins, DNA damage response and CDK-mediated phosphorylation and removal of Cdc6. This protein falls under the BCL-2 protein family. It cooperates with direct activator proteins to induce mitochondrial outer membrane permeabilization and apoptosis. It can bind to anti-apoptotic Bcl-2 family members to induce mitochondrial dysfunction and caspase activation. It is also an essential mediator of p53/TP53-dependent and p53/TP53 independent apoptosis. PUMA is expressed ubiquitously. NB-22-5270 was affinity-purified from rabbit antiserum by affinity-chromatography using epitope-specific immunogen. This polyclonal antibody detects endogenous levels of PUMA protein.

### **Product Description**

<b>Code</b>	NB-22-5270
<b>Host</b>	Rabbit
<b>Reactivity</b>	Human, Mouse, Rat
<b>Applications</b>	ELISA, WB

<b>Immunogen</b>	Synthesized peptide derived from human PUMA.
<b>Immunogen Region</b>	C-terminal
<b>Gene ID</b>	27113 (Human) / 170770 (Mouse) / 317673 (Rat)
<b>Gene Symbol</b>	BBC3
<b>Dilution range</b>	WB 1:500-1:2000 / ELISA 1:10000
<b>Specificity</b>	PUMA Polyclonal Antibody detects endogenous levels of PUMA protein
<b>Tissue Specificity</b>	Ubiquitously expressed.
<b>Purification</b>	The antibody was affinity-purified from rabbit antiserum by affinity-chromatography using epitope-specific immunogen.
<b>Protein Name</b>	Bcl-2-binding component 3 - BBC3 - JFY1 - PUMA - BCL2 binding component 3
<b>Molecular Weight</b>	23 kDa
<b>Clonality</b>	Polyclonal
<b>Conjugation</b>	Unconjugated
<b>Isotype</b>	IgG
<b>Formulation</b>	Liquid in PBS containing 50% glycerol, 0.5% BSA and 0.02% sodium azide.
<b>Concentration</b>	1 mg/ml
<b>Storage Instruction</b>	Store at -20°C, and avoid repeat freeze-thaw cycles.

## Target

---

<b>Database Links</b>	Human UniProt/Swiss-Prot: <a href="#">Q9BXH1</a> Mouse UniPort/Swiss-Prot: <a href="#">Q99ML1</a> Rat UniProt/Swiss-Port: <a href="#">Q80ZG6</a> Human Entrez Gene: <a href="#">27113</a>
-----------------------	--

Mouse Entrez Gene: [170770](#)

Rat Entrez Gene: [Rn.25176](#)

<b>Alternative Names</b>	BBC3 / BCL2 binding component 3 / Bcl-2 binding component 3 antibody / Bcl-2-binding component 3 antibody / BH3-only antibody / D623_10010037 antibody / hypothetical protein antibody / JFY1 antibody / JFY-1 antibody / MDA_GLEAN10008340 antibody / p53 up-regulated modulator of apoptosis antibody / PAL_GLEAN10004089 antibody / PANDA_012168 antibody / PUMA antibody / PUMA /JFY1 antibody / TREES_T100011411 antibody
<b>Function</b>	Essential mediator of p53/TP53-dependent and p53/TP53-independent apoptosis. Functions by promoting partial unfolding of BCL2L1 and dissociation of BCL2L1 from p53/TP53. Regulates ER stress-induced neuronal apoptosis.
<b>Sequence and Domain Family</b>	The BH3 motif is intrinsically disordered.
<b>Cellular Localization</b>	Mitochondrion Note=Localized to the mitochondria in order to induce cytochrome c release.

***For reference only***

***For Research Use Only. Not for Diagnostic or Therapeutic Use.***