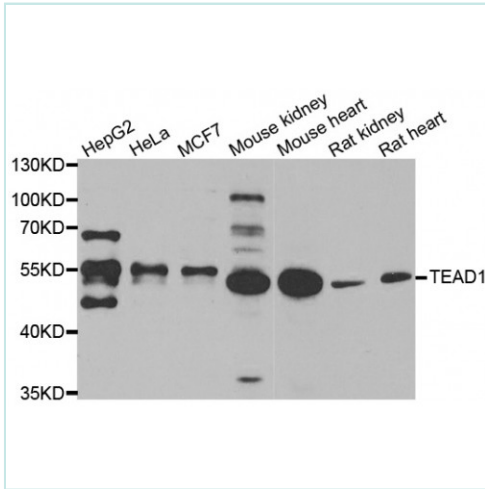


## TEAD1 antibody



### Product Description

This gene encodes a ubiquitous transcriptional enhancer factor that is a member of the TEA/ATTS domain family. This protein directs the transactivation of a wide variety of genes and, in placental cells, also acts as a transcriptional repressor. Mutations in this gene cause Sveinsson's chorioretinal atrophy. Additional transcript variants have been described but their full-length natures have not been experimentally verified.

### Product Information

<b>Code:</b>	NB-22-23240
<b>Clonality</b>	Polyclonal
<b>Host</b>	Rabbit
<b>Reactivity</b>	Human, Rat
<b>Applications</b>	WB, IHC
<b>Conjugation</b>	Unconjugated
<b>Gene ID</b>	7003
<b>Isotype</b>	IgG
<b>Dilution range</b>	WB 1:500-1:2000; IHC 1:50-1:200
<b>Swiss-Prot Key</b>	P28347
<b>Purification</b>	Affinity purification
<b>Form</b>	PBS with 0.02% sodium azide, 50% glycerol, pH7.4
<b>Molecular Weight</b>	N/A
<b>Concentration</b>	1 mg/ml
<b>Storage</b>	Store at -20°C. Avoid repeated freeze/thaw cycles.
<b>Alternative names</b>	AA; REF1; TCF13; TEF-1; NTEF-1; TCF-13; TEAD-1;
<b>Note</b>	For research use only.