

A23835

Leader in Biomolecular Solutions for Life Science



BRRF2 Rabbit mAb

Catalog No.: A23835 **Recombinant**

Basic Information

Observed MW

72kDa

Calculated MW

56KDa

Category

SMab Recombinant Monoclonal
Antibody

Applications

WB,IF/ICC,ELISA

Cross-Reactivity

Epstein-Barr virus

CloneNo number

ARC61624

Background

BRRF2 is a capsid protein, but it can be secreted into the bloodstream, giving it the opportunity to be a diagnostic or immunotherapy target. The Epstein-Barr virus BRRF2 gene product is involved in viral progeny production.

Recommended Dilutions

WB	1:1000 - 1:5000
IF/ICC	1:50 - 1:200

Immunogen Information

Gene ID	Swiss Prot
3783729	P03210

Immunogen

Recombinant protein of Epstein-Barr virus (strain B95-8) (HHV-4) BRRF2.

Synonyms

Tegument protein BRRF2; BRRF2

Contact

 www.abclonal.com

Product Information

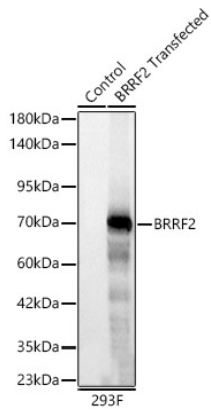
Source	Isotype	Purification
Rabbit	IgG	Affinity purification

Storage

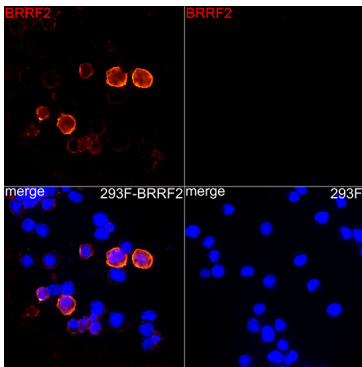
Store at -20°C. Avoid freeze / thaw cycles.

Buffer: PBS with 0.05% proclin300, 0.05% BSA, 50% glycerol, pH 7.3.

Validation Data



Western blot analysis of lysates from wild type (WT) and 293F cells transfected with BRRF2 using BRRF2 Rabbit mAb (A23835) at 1:2500 dilution.
Secondary antibody: HRP Goat Anti-Rabbit IgG (H+L) (AS014) at 1:10000 dilution.
Lysates/proteins: 25 µg per lane.
Blocking buffer: 3% nonfat dry milk in TBST.
Detection: ECL Basic Kit (RM00020).
Exposure time: 0.5s.



Immunofluorescence analysis of 293F-BRRF2 and 293F cells using BRRF2 Rabbit mAb (A23835) at dilution of 1:100 (40x lens).
Secondary antibody: Cy3 Goat Anti-Rabbit IgG (H+L) (AS007) at 1:500 dilution. Blue: DAPI for nuclear staining.