

A9752

Leader in Biomolecular Solutions for Life Science



Alpha-2-Macroglobulin (A2M) Rabbit mAb

Catalog No.: A9752 **Recombinant** **1 Publications**

Basic Information

Observed MW

185kDa

Calculated MW

163kDa

Category

SMab Recombinant Monoclonal Antibody

Applications

WB,IHC-P,IF/ICC,ELISA

Cross-Reactivity

Human,Mouse,Rat

CloneNo number

ARC1734

Background

The protein encoded by this gene is a protease inhibitor and cytokine transporter. It uses a bait-and-trap mechanism to inhibit a broad spectrum of proteases, including trypsin, thrombin and collagenase. It can also inhibit inflammatory cytokines, and it thus disrupts inflammatory cascades. Mutations in this gene are a cause of alpha-2-macroglobulin deficiency. This gene is implicated in Alzheimer's disease (AD) due to its ability to mediate the clearance and degradation of A-beta, the major component of beta-amyloid deposits. A related pseudogene, which is also located on the p arm of chromosome 12, has been identified.

Recommended Dilutions

WB	1:500 - 1:1000
IHC-P	1:50 - 1:200
IF/ICC	1:50 - 1:200

Immunogen Information

Gene ID	Swiss Prot
2	P01023

Immunogen

A synthetic peptide corresponding to a sequence within amino acids 1200-1300 of human Alpha-2-Macroglobulin (A2M) (P01023).

Synonyms

A2MD; CPAMD5; FWP007; S863-7; Alpha-2-Macroglobulin (A2M)

Contact



www.abclonal.com

Product Information

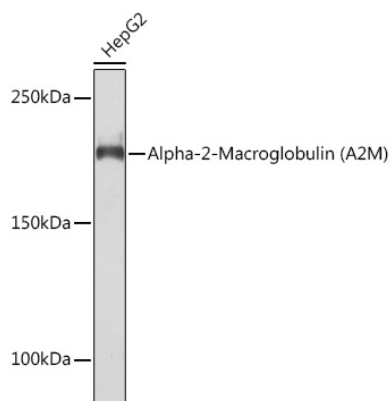
Source	Isotype	Purification
Rabbit	IgG	Affinity purification

Storage

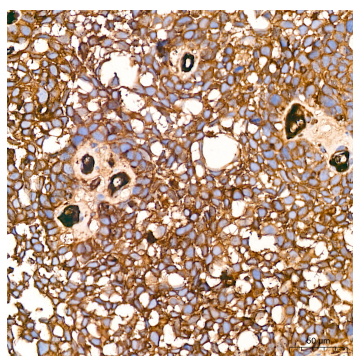
Store at -20°C. Avoid freeze / thaw cycles.

Buffer: PBS with 0.02% sodium azide,0.05% BSA,50% glycerol,pH7.3.

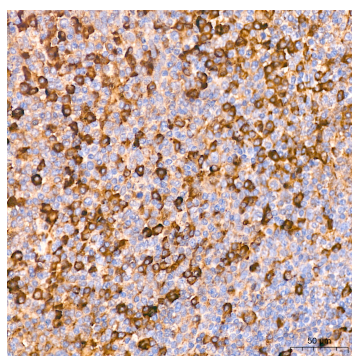
Validation Data



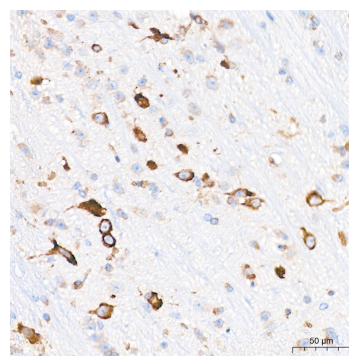
Western blot analysis of lysates from Hep G2 cells, using Alpha-2-Macroglobulin (Alpha-2-Macroglobulin (A2M)) Rabbit mAb (A9752) at 1:1000 dilution.
 Secondary antibody: HRP Goat Anti-Rabbit IgG (H+L) (AS014) at 1:10000 dilution.
 Lysates/proteins: 25µg per lane.
 Blocking buffer: 3% nonfat dry milk in TBST.
 Detection: ECL Basic Kit (RM00020).
 Exposure time: 90s.



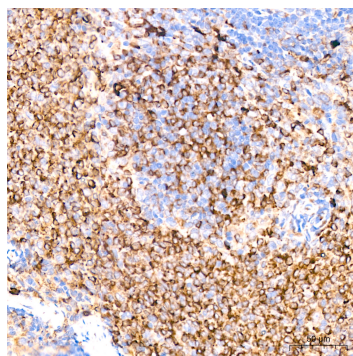
Immunohistochemistry analysis of Alpha-2-Macroglobulin (A2M) in paraffin-embedded human cervix cancer tissue using Alpha-2-Macroglobulin (A2M) Rabbit mAb (A9752) at a dilution of 1:200 (40x lens). High pressure antigen retrieval was performed with 0.01 M citrate buffer (pH 6.0) prior to IHC staining.



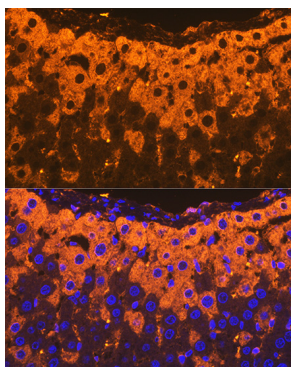
Immunohistochemistry analysis of Alpha-2-Macroglobulin (A2M) in paraffin-embedded human tonsil tissue using Alpha-2-Macroglobulin (A2M) Rabbit mAb (A9752) at a dilution of 1:200 (40x lens). High pressure antigen retrieval was performed with 0.01 M citrate buffer (pH 6.0) prior to IHC staining.



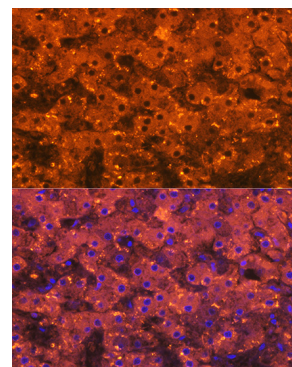
Immunohistochemistry analysis of Alpha-2-Macroglobulin (A2M) in paraffin-embedded mouse brain tissue using Alpha-2-Macroglobulin (A2M) Rabbit mAb (A9752) at a dilution of 1:200 (40x lens). High pressure antigen retrieval was performed with 0.01 M citrate buffer (pH 6.0) prior to IHC staining.



Immunohistochemistry analysis of Alpha-2-Macroglobulin (A2M) in paraffin-embedded rat spleen tissue using Alpha-2-Macroglobulin (A2M) Rabbit mAb (A9752) at a dilution of 1:200 (40x lens). High pressure antigen retrieval was performed with 0.01 M citrate buffer (pH 6.0) prior to IHC staining.

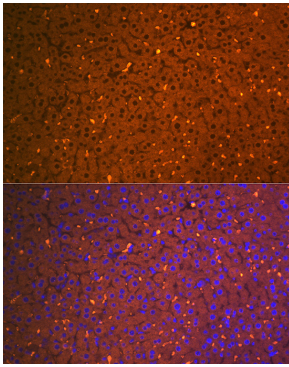


Immunofluorescence analysis of paraffin-embedded rat liver using Alpha-2-Macroglobulin (Alpha-2-Macroglobulin (A2M)) Rabbit mAb (A9752) at dilution of 1:100 (40x lens). Secondary antibody: Cy3 Goat Anti-Rabbit IgG (H+L) (AS007) at 1:500 dilution. Blue: DAPI for nuclear staining.



Immunofluorescence analysis of paraffin-embedded human liver using Alpha-2-Macroglobulin (Alpha-2-Macroglobulin (A2M)) Rabbit mAb (A9752) at dilution of 1:100 (40x lens). Secondary antibody: Cy3 Goat Anti-Rabbit IgG (H+L) (AS007) at 1:500 dilution. Blue: DAPI for nuclear staining.

Validation Data



Immunofluorescence analysis of paraffin-embedded mouse liver using Alpha-2-Macroglobulin (Alpha-2-Macroglobulin (A2M)) Rabbit mAb (A9752) at dilution of 1:100 (40x lens). Secondary antibody: Cy3 Goat Anti-Rabbit IgG (H+L) (AS007) at 1:500 dilution. Blue: DAPI for nuclear staining.