

A6824

Leader in Biomolecular Solutions for Life Science



DCP1A Rabbit mAb

Catalog No.: A6824

Recombinant

1 Publications

Basic Information

Observed MW

73kDa

Calculated MW

63kDa

Category

SMab Recombinant Monoclonal Antibody

Applications

WB,IHC-P,IF/ICC,ELISA

Cross-Reactivity

Human,Mouse

CloneNo number

ARC1421

Recommended Dilutions

WB 1:500 - 1:2000

IHC-P 1:50 - 1:200

IF/ICC 1:50 - 1:200

Background

Decapping is a key step in general and regulated mRNA decay. The protein encoded by this gene is a decapping enzyme. This protein and another decapping enzyme form a decapping complex, which interacts with the nonsense-mediated decay factor hUpf1 and may be recruited to mRNAs containing premature termination codons. This protein also participates in the TGF-beta signaling pathway. Alternative splicing of this gene results in multiple transcript variants.

Immunogen Information

Gene ID

55802

Swiss Prot

Q9NPI6

Immunogen

A synthetic peptide corresponding to a sequence within amino acids 483-582 of human DCP1A (Q9NPI6).

Synonyms

SMIF; SMAD4IP1; HSA275986; Nbla00360; DCP1A

Contact

 www.abclonal.com

Product Information

Source

Rabbit

Isotype

IgG

Purification

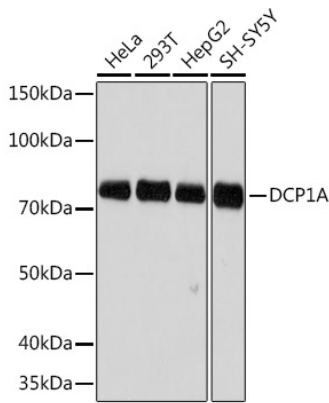
Affinity purification

Storage

Store at -20°C. Avoid freeze / thaw cycles.

Buffer: PBS with 0.02% sodium azide,0.05% BSA,50% glycerol,pH7.3.

Validation Data



Western blot analysis of various lysates using DCP1A Rabbit mAb (A6824) at 1:500 dilution.

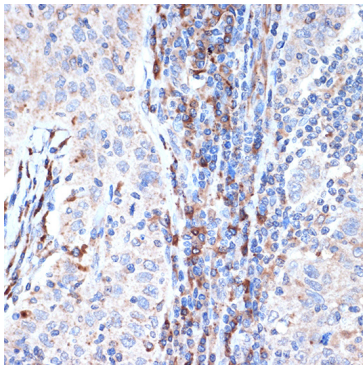
Secondary antibody: HRP Goat Anti-Rabbit IgG (H+L) (AS014) at 1:10000 dilution.

Lysates/proteins: 25µg per lane.

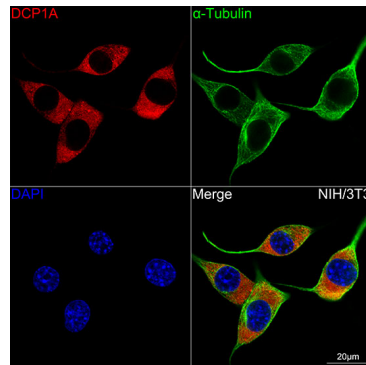
Blocking buffer: 3% nonfat dry milk in TBST.

Detection: ECL Basic Kit (RM00020).

Exposure time: 3min.



Immunohistochemistry analysis of paraffin-embedded Human esophageal cancer using DCP1A Rabbit mAb (A6824) at dilution of 1:100 (40x lens). Perform microwave antigen retrieval with 10 mM Tris/EDTA buffer pH 9.0 before commencing with IHC staining protocol.



Confocal imaging of NIH/3T3 cells using DCP1A Rabbit mAb (A6824) at dilution of 1:100 (Red). The cells were counterstained with α -Tubulin Mouse mAb (AC012, dilution 1:400) (Green). DAPI was used for nuclear staining (blue). Objective: 100x.