

A7382

Leader in Biomolecular Solutions for Life Science



NLRC4 Rabbit pAb

Catalog No.: A7382

13 Publications

Basic Information

Observed MW

116kDa

Calculated MW

116kDa

Category

Polyclonal Antibody

Applications

WB,IF/ICC,ELISA

Cross-Reactivity

Human,Mouse,Rat

Background

This gene encodes a member of the caspase recruitment domain-containing NLR family. Family members play essential roles in innate immune response to a wide range of pathogenic organisms, tissue damage and other cellular stresses. Mutations in this gene result in autoinflammation with infantile enterocolitis. Alternative splicing results in multiple transcript variants.

Recommended Dilutions

WB	1:100 - 1:500
IF/ICC	1:50 - 1:200

Immunogen Information

Gene ID

58484

Swiss Prot

Q9NPP4

Immunogen

Recombinant fusion protein containing a sequence corresponding to amino acids 85-170 of human NLRC4 (NP_001186067.1).

Synonyms

CLAN; IPAF; AIFEC; CLAN1; CLANA; CLANB; CLANC; CLAND; FCAS4; CARD12; CLR2.1; NLRC4

Contact



www.abclonal.com

Product Information

Source

Rabbit

Isotype

IgG

Purification

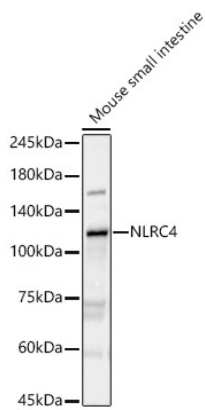
Affinity purification

Storage

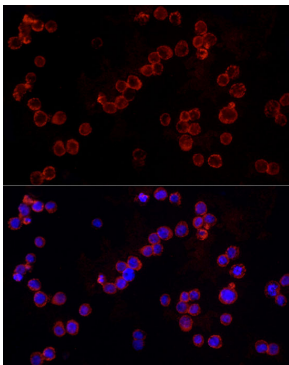
Store at -20°C. Avoid freeze / thaw cycles.

Buffer: PBS with 0.05% proclin300,50% glycerol,pH7.3.

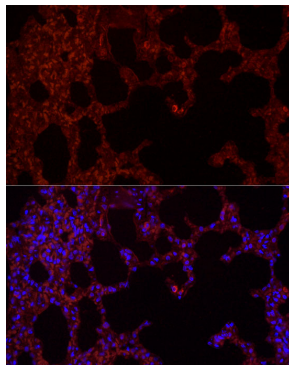
Validation Data



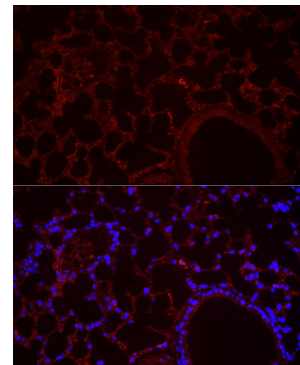
Western blot analysis of Mouse small intestine, using NLRC4 Rabbit pAb (A7382) at 1:400 dilution.
Secondary antibody: HRP Goat Anti-Rabbit IgG (H+L) (AS014) at 1:10000 dilution.
Lysates/proteins: 25ug per lane.
Blocking buffer: 3% nonfat dry milk in TBST.
Detection: ECL Basic Kit (RM00020).
Exposure time: 180s.



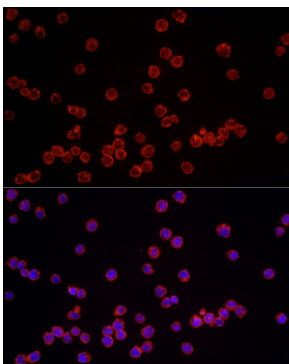
Immunofluorescence analysis of THP-1 cells using NLRC4 Rabbit pAb (A7382) at dilution of 1:100 (40x lens). Blue: DAPI for nuclear staining.



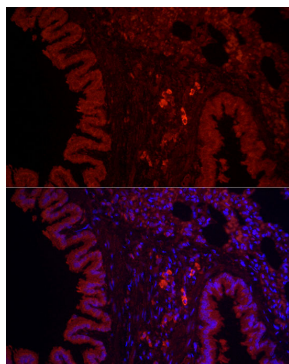
Immunofluorescence analysis of rat lung cells using NLRC4 Rabbit pAb (A7382) at dilution of 1:100 (40x lens). Blue: DAPI for nuclear staining.



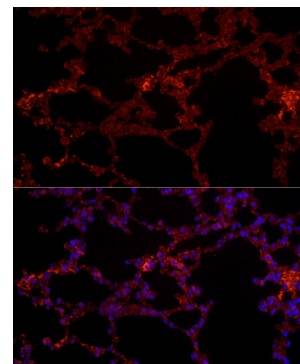
Immunofluorescence analysis of mouse lung cells using NLRC4 Rabbit pAb (A7382) at dilution of 1:100 (40x lens). Blue: DAPI for nuclear staining.



Immunofluorescence analysis of THP-1 cells using NLRC4 Rabbit pAb (A7382) at dilution of 1:100 (40x lens). Blue: DAPI for nuclear staining.



Immunofluorescence analysis of rat lung cells using NLRC4 Rabbit pAb (A7382) at dilution of 1:100 (40x lens). Blue: DAPI for nuclear staining.



Immunofluorescence analysis of mouse lung cells using NLRC4 Rabbit pAb (A7382) at dilution of 1:100 (40x lens). Blue: DAPI for nuclear staining.