

Retinal Microvascular Endothelial Cells

Cat# NB-11-0004

Introduction

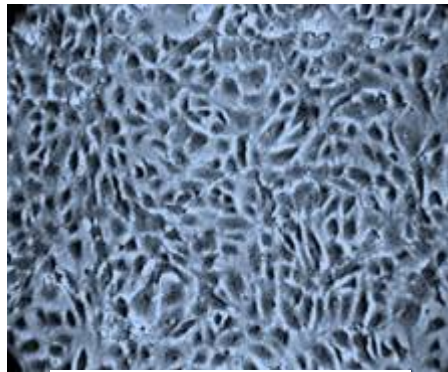
Primary Human Retinal Microvascular Endothelial Cells (NB-11-0004) are initiated by elutriation of dispase dissociated normal human retina tissue.

Cell initiation

These cells were originated using CSC Complete Serum-Free Medium (NB-11-0061), are available at < 12 Cumulative Population Doublings (CPD) in vitro (Passage 3) and were cryopreserved in aliquots of $\sim 1.5 \times 10^6$ cells. This vial will initiate a Passage 4 cell culture in a 75cm² flask.

These cells are available in cryopreserved vials as well as in 25cm² and 75cm² proliferating cell culture flasks.

We have other individual donor lots available. Please contact us for details.



Digital Phase-Contrast Image (40X)

Companion Products

Each vial or flask of cells is shipped to Customer with Bac-Off® (antibiotic) and CultureBoost (animal derived growth factors) or CultureBoost-R (human recombinant growth factors) at no additional cost.

These cells are qualified for use with: CSC Complete Serum Free Medium (NB-11-0061) and CSC Complete Medium which includes 10% serum (NB-11-0046); CSC Attachment Factor™ (NB-11-0069); CSC Passage Reagent Group™ (NB-11-0076) and CSC Cell Freezing Medium (NB-11-0075).

Cell Growth Images



NB-11-0004 1 days after plating, plated with Attachment Factor, fed using CSC Complete Medium Kit With Serum and Cultureboost-R (NB-11-0075)

Standard Tests

TEST	RESULTS
HIV Serologic Test (donor level HIV AB EIA)	Negative
HIV PCR TEST (frozen cell pool by CLIA Licensed Clinical Lab)	Negative
Test of frozen cells for Mycoplasma spp. (ATCC method by CLIA Licensed Clinical Lab)	Negative

Miscellaneous Tests

TEST	RESULTS
Cytoplasmic VWF / Factor VIII	> 95% positive by immunofluorescence
Cytoplasmic uptake of Di-I-Ac-LDL	> 95% positive by immunofluorescence