

Anti-KRT18 antibody [1B3]

Cat # NB-22-6995 ; Sizes :20µg, 50µg, 100µg, 200µg

GENERAL INFORMATION

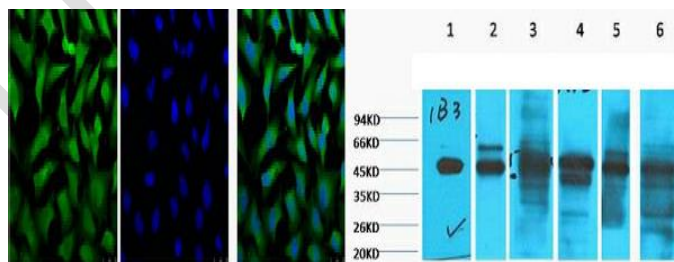
Product Type	Primary antibodies
Short Description	Mouse monoclonal antibody anti-Keratin-Type I Cytoskeletal 18 is suitable for use in Western Blot, Immunofluorescence and Immunocytochemistry research applications.
Applications	WB, IF, ICC
Host/Source	Mouse
Reactivity	Human, Rat, Mouse

PRODUCT PROPERTIES

Clonality	Monoclonal
Clone ID	1B3
Concentration	
Conjugation	Unconjugated
Purification	The antibody was isolated from ascitic fluid by immunoaffinity chromatography using antigens coupled to agarose beads.
Dilution Range	WB 1:1000 3000 IF 1:100-200
Formulation	PBS, pH 7.4, 0.5% BSA, 0.02% Sodium Azide and 50% Glycerol.
Isotype	IgG1
Storage Instruction	Store at -20°C for up to 1 year from the date of receipt, and avoid repeat freeze-thaw cycles.

TARGET INFORMATION

Gene ID	3875
Gene Symbol	KRT18
Uniprot ID	K1C18_HUMAN
Immunogen	Recombinant Protein of Keratin type I cytoskeletal 18
Immunogen Region	
Specificity	KRT18 monoclonal antibody (Keratin-Type I Cytoskeletal 18) binds to endogenous Keratin-Type I Cytoskeletal 18.
Immunogen sequence	



IF analysis of HeLa, and DAPI (Right) diluted at 1:100

Western blot analysis of 1) HepG2, 2) HeLa, 3) Mouse Liver tissue, 4) C2C12, 5) Rat Heart tissue, 6) Mouse Skeletal Muscle tissue, diluted at 1:2000

This product is suitable for in-vitro studies under the RESEARCH USE ONLY [RUO] licence. This product must not be used as for diagnostic or other medical purposes.