



**Name:** Cortisol Affinity Resin

**Catalog Number:** R001-500UL

**Lot Number:** 09C003

**Amt/Quantity:** 0.5 mL settled resin.

**Antibody:** 5 mg per mL settled resin of sheep polyclonal purified antibody specific to cortisol.

**Format:** 50% slurry in PBS, pH 7.2, 0.1% Tween-20, 0.09% Kathon.

**Description:** A sheep antibody specific for cortisol coupled to 60-160  $\mu\text{m}$  agarose resin through mild chemistry yielding a stable resin with high binding capacity for cortisol.

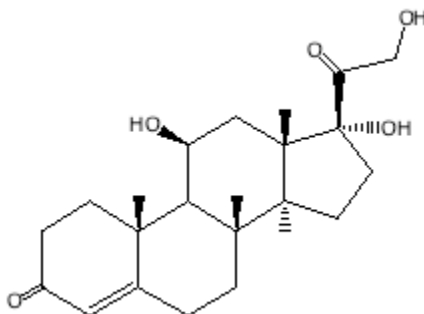
**Application:** As an affinity enrichment resin prior to mass spectrometry or other applications.

**Capacity:** > 5.5  $\mu\text{g}$  of Cortisol per mL of settled resin.  
(Determined by immunoassay of 0.2M glycine, pH2.5 eluate).

**Cross Reactivity:** Not Tested.

**Storage:** Store at 4°C. **Do Not Freeze!** Stable until expiration date printed on label.

**Antigen Structure:**



**FOR RESEARCH USE ONLY. NOT FOR USE IN DIAGNOSTIC PROTOCOLS.**