



Correlate™ EIA
Direct Cyclic GMP
Enzyme Immunoassay Kit

Catalog No. 900-014

96 Well Kit

Table of Contents

Description	Page	2
Introduction		2
Precautions		2
Materials Supplied		3
Storage		3
Materials Needed but Not Supplied		3
Sample Handling		4
Procedural Notes		4
Reagent Preparation		5
Assay Procedure		6
Calculation of Results		7
Typical Results		7
Typical Standard Curve		8
Typical Quality Control Parameters		8
Performance Characteristics		8
Sample Dilution Recommendations		11
References		11
Limited Warranty		12

FOR RESEARCH USE ONLY. NOT FOR USE IN DIAGNOSTIC PROCEDURES.

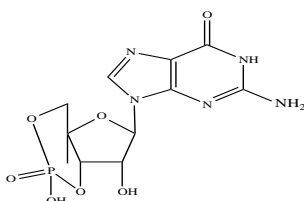
Description

Assay Designs' Correlate™ EIA Direct cyclic GMP kit is a competitive immunoassay for the quantitative determination of cyclic GMP in samples treated with 0.1M HCl. The kit uses a polyclonal antibody to cGMP to bind, in a competitive manner, the cGMP in the standards or sample or an alkaline phosphatase molecule which has cGMP covalently attached to it. After a simultaneous incubation the excess reagents are washed away and substrate is added. After a short incubation time the enzyme reaction is stopped and the yellow color generated read on a microplate reader at 405nm. The intensity of the bound yellow color is inversely proportional to the concentration of cGMP in either standards or samples. The measured optical density is used to calculate the concentration of cGMP. The optional overnight acetylated assay format allows super-sensitive detection of cGMP. For further explanation of the principles and practice of immunoassays please see the excellent books by Chard¹ or Tijssen².

Introduction

Guanosine 3', 5'-cyclic monophosphate (cyclic GMP; cGMP) has been shown to be present at levels typically 10-100 fold lower than cAMP in most tissues and is formed by the action of the enzyme guanylate cyclase on GTP³. Some hormones, such as acetylcholine, insulin and oxytocin, as well as certain other chemicals like serotonin and histamine cause an increase in cGMP levels^{4,5}. Stimulators of guanylate cyclase such as the vasodilators nitroprusside, nitroglycerin, sodium nitrate and nitric oxide (NO) also increase cGMP levels⁶. NO can be synthesized from L-arginine and diffuse through cell membranes^{9,10}. The interaction of NO with guanylate cyclase allows cGMP to act as a third messenger in some cells¹¹. Bioactive peptides like atrial natriuretic peptide (ANP) also increase cGMP concentrations^{7,8}.

Cyclic GMP



Precautions

FOR RESEARCH USE ONLY. NOT FOR USE IN DIAGNOSTIC PROCEDURES.

1. Some kit components contain azide, which may react with lead or copper plumbing. When disposing of reagents always flush with large volumes of water to prevent azide build-up.
2. Some solutions supplied in this kit are caustic: care should be taken with their use.
3. The activity of the alkaline phosphatase conjugate is dependent on the presence of Mg²⁺ and Zn²⁺ ions. The activity of the conjugate is affected by concentrations of chelators (>10 mM) such as EDTA and EGTA.
4. We test this kit's performance with a variety of samples, however it is possible that high levels of interfering substances may cause variation in assay results.
5. The cyclic GMP Standard provided, Catalog No. 80-0153, is supplied in ethanolic buffer at a pH optimized to maintain cGMP integrity. Care should be taken in handling this material because of the known and unknown effects of cGMP.

CAUTION: Some components of this kit contain chemicals that are lachrymators, corrosive and flammable. Use with caution and wear suitable protection. Refer to the Material Safety Data Sheets available on our Web site or by fax (See Page 12).

Materials Supplied

1. **Goat anti-Rabbit IgG Microtiter Plate, One Plate of 96 Wells, Catalog No. 80-0060**
A plate using break-apart strips coated with goat antibody specific to rabbit IgG.
2. **cGMP Direct Conjugate, 6 mL, Catalog No. 80-0198**
A blue solution of alkaline phosphatase conjugated with cGMP.
3. **cGMP Direct Antibody, 6 mL, Catalog No. 80-0199**
A yellow solution of a rabbit polyclonal antibody to cGMP.
4. **0.1M HCl, 30 mL, Catalog No. 80-0080**
0.1M hydrochloric acid in water. **CAUTION: Acid, wear suitable protective clothing.**
5. **Neutralizing Reagent, 6 mL, Catalog No. 80-1475**
6. **Wash Buffer Concentrate, 30 mL, Catalog No. 80-1286**
Tris buffered saline containing detergents.
7. **Cyclic GMP Standard, 0.5 mL, Catalog No. 80-0153**
A solution of 5,000 pmol/mL cGMP.
8. **p-Npp Substrate, 23 mL, Catalog No. 80-0075**
A solution of p-nitrophenyl phosphate in buffer. Ready to use.
9. **Stop Solution, 6 mL, Catalog No. 80-0247**
A solution of trisodium phosphate in water. Keep tightly capped. Caution: **Caustic.**
10. **Triethylamine, 2 mL, Catalog No. 80-0063**
CAUTION: Lachrymator, Harmful Vapor, Flammable.
11. **Acetic Anhydride, 1 mL, Catalog No. 80-0064**
CAUTION: Lachrymator, Corrosive, Flammable.
12. **Direct cGMP Assay Layout, 1 each, Catalog No. 30-0033**
13. **Plate Sealer, 1 each, Catalog No. 30-0012**

Storage

All components of this kit are stable at 4°C until the kit's expiration date.

Materials Needed but Not Supplied

1. Deionized or distilled water.
2. Precision pipets for volumes between 5 µL and 1,000 µL.
3. Repeater pipets for dispensing 50 µL and 200 µL.
4. Disposable beakers for diluting buffer concentrates.
5. Graduated cylinders.
6. A microplate shaker.
7. Adsorbent paper for blotting.
8. Microplate reader capable of reading at 405 nm, preferably with correction between 570 and 590 nm.

Sample Handling

Assay Designs' Correlate™ EIA is compatible with cGMP samples that have been treated with hydrochloric acid to stop endogenous phosphodiesterase activity. Samples in this matrix can be measured directly without evaporation or further treatment. Please refer to the Sample Recovery recommendations on page 11 for details of suggested dilutions. However, the end user **must verify** that the recommended dilutions are appropriate for their samples. We have provided reagents to acetylate samples and standards for samples with very low levels of cGMP.

Tissue samples should be frozen in liquid nitrogen. The tissue should be ground to a fine powder under liquid nitrogen in a stainless steel mortar. After the liquid nitrogen has evaporated, weigh the frozen tissue and homogenize in 10 volumes of 0.1M HCl. Centrifuge at $\geq 600 \times g$ at room temperature. The samples can then be diluted in the 0.1M HCl provided for the assay.

Cells grown in tissue culture media can be treated with 0.1M HCl after first removing the media. Incubate for 10 minutes and visually inspect the cells to verify cell lysis. If adequate lysis has not occurred incubate for a further 10 minutes and inspect. Centrifuge at $\geq 600 \times g$ at room temperature, then use the supernatant directly in the assay. Cell or tissue lysis can be enhanced by adding 0.1% to 1% Triton x-100 to the 0.1M HCl prior to use. When used in this concentration range, the detergent will not interfere with acetylation or the binding portion of the assay, however there will be a modest increase in the optical density. Samples containing Triton should be evaluated against a standard curve diluted in the same for the most accurate determination. Cyclic GMP in the media can be measured after treating 1 mL of the supernatant media with 10 μ L of **concentrated** hydrochloric acid. Centrifuge at $\geq 600 \times g$ at room temperature. The supernatants can then be used directly in the assay.

Procedural Notes

1. Do not mix components from different kit lots or use reagents beyond the kit expiration date.
2. Allow all reagents to warm to room temperature for at least 30 minutes before opening.
3. Standards can be made up in either glass or polypropylene tubes; **avoid polystyrene**.
4. Pre-rinse the pipet tip with reagent, use fresh pipet tips for each sample, standard and reagent.
5. Pipet standards and samples to the bottom of the wells.
6. Add the reagents to the side of the well to avoid contamination.
7. This kit uses break-apart microtiter strips, which allow the user to measure as many samples as desired. Unused wells must be kept desiccated at 4°C in the sealed bag provided. The wells should be used in the frame provided.
8. **Care must be taken to minimize contamination by endogenous alkaline phosphatase.** Contaminating alkaline phosphatase activity, especially in the substrate solution, may lead to high blanks. Care should be taken not to touch pipet tips and other items that are used in the assay with bare hands.
9. **Prior to addition of substrate, ensure that there is no residual wash buffer in the wells. Any remaining wash buffer may cause variation in assay results.**

Reagent Preparation

1. cGMP Standard - Non-Acetylated Version

Allow the 5,000 pmol/mL cGMP standard solution to warm to room temperature. Label five 12 x 75 mm glass tubes #1 through #5. Pipet 900 μ L 0.1M HCl into tube #1 and 800 μ L of 0.1M HCl into tubes #2-5. Add 100 μ L of the 5,000 pmol/mL standard to tube #1. Vortex thoroughly. Add 200 μ L of tube #1 to tube #2 and vortex thoroughly. Continue this for tubes #3 through #5.

The concentration of cGMP in tubes #1 through #5 will be 500, 100, 20, 4 and 0.8 pmol/mL respectively. See Direct cGMP Assay Layout Sheet for dilution details.

Diluted standards should be used within 60 minutes of preparation.

2. Acetylation Reagent

Prepare the Acetylating Reagent by adding 0.5 mL of acetic anhydride to 1 mL triethylamine. **Use the prepared reagent within 60 minutes of preparation.**

3. cGMP Standard - Acetylated Version

Allow the 5,000 pmol/mL cGMP standard solution to warm to room temperature. Label five 12 x 75 mm glass tubes #1 through #5. Pipet 990 μ L 0.1M HCl into tube #1 and 800 μ L 0.1M HCl into tubes #2-5. Add 10 μ L of the 5,000 pmol/mL standard to tube #1. Vortex thoroughly. Add 200 μ L of tube #1 to tube #2 and vortex thoroughly. Continue this for tubes #3 through #5.

The concentration of cGMP in tubes #1 through #5 will be 50, 10, 2, 0.4, and 0.08 pmol/mL respectively. See Direct cGMP Assay Layout Sheet for dilution details.

Acetylate all standards and samples by adding 10 μ L of the Acetylating Reagent for each 200 μ L of standard or sample. Add the reagent directly to the samples and vortex for 2 seconds immediately after the addition.

Label one 12 x 17 mm glass tube as the Zero Standard/NSB tube. Pipet 1 mL 0.1M HCl into this tube. Add 50 μ L of the Acetylating Reagent to the Zero Standard/NSB tube and use in Step 3 and 6, on Page 6. **Failure to acetylate the NSB and Zero standard will result in inaccurate B/Bo values.**

Use the acetylated standards or samples within 30 minutes.

4. Wash Buffer

Prepare the Wash Buffer by diluting 5 mL of the supplied concentrate with 95 mL of deionized water. This can be stored at room temperature until the kit expiration date, or for 3 months, whichever is earlier.

Assay Procedure

Bring all reagents to room temperature for at least 30 minutes prior to opening.

All standards and samples should be run in duplicate.

If Acetylated Version of the kit is to be run, acetylate all standards and samples by adding 10 μL of the Acetylating Reagent for each 200 μL of standard or sample. Add 50 μL of the Acetylating Reagent to the Zero Standard/NSB tube (Refer to Step 3 on Page 5) and use in Steps 3 and 6 below (Failure to acetylate the NSB and Zero standard will result in inaccurate B/Bo values). Add the reagent directly to the samples and vortex for 2 seconds immediately after the addition. Use the acetylated standards or samples within 30 minutes.

1. Refer to the Assay Layout Sheet to determine the number of wells to be used and put any remaining wells with the desiccant back into the pouch and seal the ziploc. Store unused wells at 4 °C.
2. Pipet 50 μL of the Neutralizing Reagent into each well, except the TA and Blank wells.
3. Pipet 100 μL of 0.1M HCl into the NSB and the Bo (0 pmol/mL Standard) wells.
4. Pipet 100 μL of Standards into the appropriate wells.
5. Pipet 100 μL of the Samples into the appropriate wells.
6. Pipet 50 μL of 0.1M HCl into the NSB wells.
7. Pipet 50 μL of blue Conjugate into each well except the TA and Blank wells.
8. Pipet 50 μL of yellow Antibody into each well, except the Blank, TA and NSB wells.

NOTE: Every well used should be **Green** in color except the NSB wells which should be **Blue**. The Blank and TA wells are empty at this point and have no color.

9. Incubate the plate at room temperature for 2 hours on a plate shaker at ~500 rpm. The plate may be covered with the plate sealer provided, if so desired. **If using the optional Overnight Acetylated Format, incubate for 18-24 hours at 4°C tightly covered with the plate sealer provided.**
10. Empty the contents of the wells and wash by adding 400 μL of wash solution to every well. Repeat the wash 2 more times for a total of **3 washes**.
11. After the final wash, empty or aspirate the wells, and firmly tap the plate on a lint free paper towel to remove any remaining wash buffer.
12. Add 5 μL of the blue Conjugate to the TA wells.
13. Add 200 μL of the pNpp Substrate solution to every well. Incubate at room temperature for 1 hour without shaking.
14. Add 50 μL of Stop Solution to every well. This stops the reaction and the plate should be read immediately.
15. Blank the plate reader against the Blank wells, read the optical density at 405 nm, preferably with correction between 570 and 590 nm. If the plate reader is not able to be blanked against the Blank wells, manually subtract the mean optical density of the Blank wells from all readings.

Calculation of Results

Several options are available for the calculation of the concentration of cGMP in the samples. We recommend that the data be handled by an immunoassay software package utilizing a weighted 4 parameter logistic curve fitting program. If this type of data reduction software is not readily available, the concentration of cGMP can be calculated as follows:

1. Calculate the average Net Optical Density (OD) bound for each standard and sample by subtracting the average NSB OD from the average OD bound:

$$\text{Average Net OD} = \text{Average Bound OD} - \text{Average NSB OD}$$
2. Calculate the binding of each pair of standard wells as a percentage of the maximum binding wells (Bo), using the following formula:

$$\text{Percent Bound} = \frac{\text{Net OD}}{\text{Net Bo OD}} \times 100$$
3. Using Logit-Log paper plot Percent Bound (B/Bo) versus concentration of cGMP for the standards. Approximate a straight line through the points. The concentration of cGMP in the unknowns can be determined by interpolation.

Typical Results

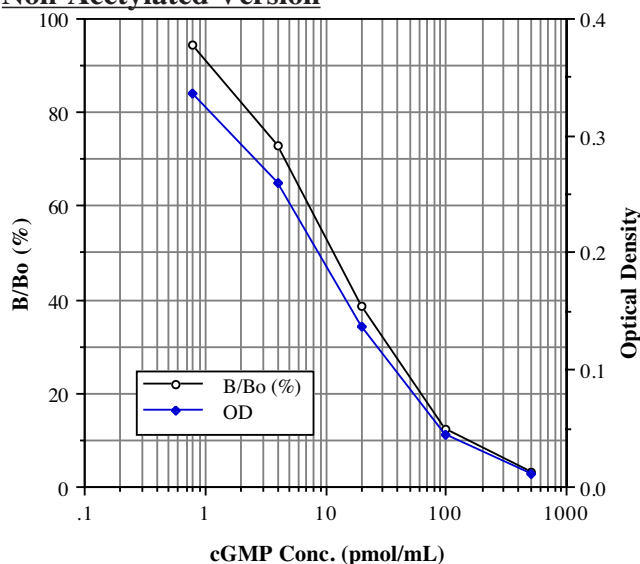
The results shown below are for illustration only and **should not** be used to calculate results from another assay.

Sample	<u>Non-Acetylated Version</u>			<u>2 Hour Acetylated Format</u>			<u>Overnight Acetylated Format</u>		
	Mean OD (-Blank)	Percent Bound	cGMP (pmol/mL)	Mean OD (-Blank)	Percent Bound	cGMP (pmol/mL)	Mean OD (-Blank)	Percent Bound	cGMP (pmol/mL)
Blank OD	(0.229)			(0.152)			(0.113)		
TA	0.389			0.381			0.381		
NSB	-0.002	0%		-0.001	0%		0.001	0%	
Bo	0.356	100%	0	0.281	100%	0	0.480	100%	0
S1	0.011	3.1%	500	0.012	4.3%	50	0.012	2.5%	50
S2	0.044	12.4%	100	0.046	16.2%	10	0.026	5.4%	10
S3	0.137	38.5%	20	0.132	46.9%	2	0.090	18.8%	2
S4	0.259	72.8%	4	0.232	82.5%	0.4	0.229	47.7%	0.4
S5	0.336	94.4%	0.8	0.275	98.0%	0.08	0.394	82.1%	0.08
Unk. 1	0.059	16.6%	71.8	0.074	20.8%	5.14	0.073	15.2%	2.55
Unk. 2	0.282	79.2%	2.78	0.251	70.5%	0.24	0.252	52.5%	0.33

Typical Standard Curves

Typical standard curves are shown below. These curves **must not** be used to calculate cGMP concentrations; each user must run a standard curve for each assay and version used.

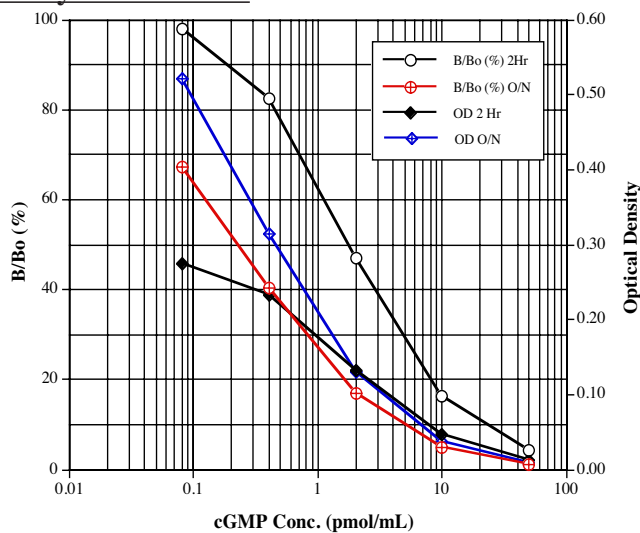
Non-Acetylated Version



Typical Quality Control Parameters

Total Activity Added =	0.389 x 10 = 3.89
%NSB =	0.0%
%Bo/TA =	9.2%
Quality of Fit =	1.0000
20% Intercept =	54.2 pmol/mL
50% Intercept =	10.8 pmol/mL
80% Intercept =	2.1 pmol/mL

Acetylated Version



Typical Quality Control Parameters

2 Hour Format

Total Activity Added =	0.381 x 10 = 3.81
%NSB =	0.0%
%Bo/TA =	7.3%
Quality of Fit =	1.0000
20% Intercept =	7.0 pmol/mL
50% Intercept =	1.6 pmol/mL
80% Intercept =	300 fmol/mL

Overnight Format

Total Activity Added =	0.381 x 10 = 3.81
%NSB =	0.0%
%Bo/TA =	12.6%
Quality of Fit =	1.0000
20% Intercept =	1.5 pmol/mL
50% Intercept =	0.3 pmol/mL

Performance Characteristics

The following parameters for this kit were determined using the guidelines listed in the National Committee for Clinical Laboratory Standards (NCCLS) Evaluation Protocols¹².

Sensitivity

Sensitivity was calculated by determining the average optical density bound for sixteen (16) wells run with the Bo, and comparing to the average optical density for sixteen (16) wells run with Standard #5 in the Non-Acetylated and Acetylated Formats. The detection limit was determined as the concentration of cGMP measured at two (2) standard deviations from the zero along the standard curve.

Non-Acetylated Version

Mean OD for Bo =	0.457 ± 0.017 (3.8%)
Mean OD for Standard #5 =	0.412 ± 0.024 (5.8%)
Delta Optical Density (0-0.8 pmol/mL) = 0.457 - 0.412 =	0.045
2 SD's of the Zero Standard =	0.034
Sensitivity = $\frac{0.034}{0.045} \times 0.8 \text{ pmol/mL} =$	604 fmol/mL

Acetylated 2 Hour Format

Mean OD for Bo =	0.282 ± 0.007 (2.5%)
Mean OD for Standard #5 =	0.263 ± 0.007 (2.7%)
Delta Optical Density (0-0.08 pmol/mL) = 0.282 - 0.263 =	0.019
2 SD's of the Zero Standard =	0.014
Sensitivity = $\frac{0.014}{0.019} \times 0.08 \text{ pmol/mL} =$	59 fmol/mL

Acetylated Overnight Format

Mean OD for Bo =	0.471 ± 0.014 (3.0%)
Mean OD for Standard #5 =	0.383 ± 0.019 (4.9%)
Delta Optical Density (0-0.08 pmol/mL) = 0.471 - 0.383 =	0.088
2 SD's of the Zero Standard =	0.028
Sensitivity = $\frac{0.028}{0.088} \times 0.08 \text{ pmol/mL} =$	25 fmol/mL

Linearity

Non-Acetylated Version

A sample containing 96.0 pmol/mL cGMP was serially diluted 7 times 1:2 in the 0.1M HCl supplied in the kit and measured in the assay. The data was plotted graphically as actual cGMP concentration versus measured cGMP concentration.

The line obtained had a slope of 1.000 with a correlation coefficient of 0.999.

Acetylated Version

A sample containing 16.0 pmol/mL cGMP was serially diluted 7 times 1:2 in the 0.1M HCl supplied in the kit and measured in the Acetylated 2 Hour Format of the assay. The data was plotted graphically as actual cGMP concentration versus measured cGMP concentration.

The line obtained had a slope of 1.001 with a correlation coefficient of 0.998.

Precision

Intra-assay precision was determined by taking samples containing low, medium and high concentrations of cGMP and running these samples multiple times (n=24) in the same assay. Inter-assay precision was determined by measuring three samples with low, medium and high concentrations of cGMP in multiple assays (n=8).

The precision numbers listed below represent the percent coefficient of variation for the concentrations of cGMP determined in these assays as calculated by a 4 parameter logistic curve fitting program.

	<u>Non-Acetylated Version</u>			<u>Acetylated 2 Hour Format</u>		
	<u>cGMP (pmol/mL)</u>	<u>Intra-assay (%CV)</u>	<u>Inter-assay (%CV)</u>	<u>cGMP (pmol/mL)</u>	<u>Intra-assay (%CV)</u>	<u>Inter-assay (%CV)</u>
Low	1.85	4.43		0.58	9.57	
Medium	9.88	7.90		1.38	3.55	
High	115.3	6.57		5.38	3.49	
Low	2.14		5.96	0.349		10.89
Medium	8.53		9.85	3.51		8.35
High	97.0		6.88	10.3		4.57

Cross Reactivities

The cross reactivities for a number of related compounds were determined by using Assay Designs' Correlate™ EIA cGMP kit, Catalog Number 900-013, which uses the same antibody and conjugate as this kit. Potential cross reactants were dissolved in the kit Assay Buffer at concentrations from 500,000 to 500 pmol/mL. These samples were then measured in the cGMP assay, and the measured cGMP concentration at 50% B/Bo calculated. The % cross reactivity was calculated by comparison with the actual concentration of cross reactant in the sample and expressed as a percentage.

<u>Compound</u>	<u>Cross Reactivity</u>
cGMP	100%
GMP	<0.001%
GTP	<0.001%
cAMP	<0.001%
AMP	<0.001%
ATP	<0.001%
cUMP	<0.001%
CTP	<0.001%

Sample Recoveries

Please refer to pages 4 and 5 for Sample Handling recommendations and Standard preparation.

cGMP concentrations were measured in tissue culture media. cGMP was spiked into the undiluted sample which was diluted with the kit 0.1M HCl and then assayed in the kit. The following results were obtained:

Sample	Non-Acetylated Version		Acetylated 2 Hour Format	
	<u>% Recovery*</u>	<u>Recommended Dilution*</u>	<u>% Recovery*</u>	<u>Recommended Dilution*</u>
Tissue Culture Media	95.9	None	86.8	None

* See Sample Handling instructions on page 4 for details.

References

1. T. Chard, "An Introduction to Radioimmunoassay & Related Techniques, 4th Ed.", (1990) Amsterdam: Elsevier.
2. P. Tijssen, "Practice & Theory of Enzyme Immunoassays", (1985) Amsterdam: Elsevier.
3. D.F. Ashman, et al., Biochem. Biophys. Res. Comm., (1963) 11: 330-4.
4. S.A. Waldman, and F. Murad, Pharmacol. Revs., (1987) 39: 163-197.
5. J. Tremblay, et al., Adv. 2nd Messenger & Phosphoprotein Res., (1988) 22: 319-383.
6. J. Collier, and P. Vallance, TIPS., (1989) 10: 427-431.
7. B. Sarcevic, et al., J. Biol. Chem., (1989) 264: 20648-20654.
8. M. Chinkers, et al., Nature, (1989) 338: 78-83.
9. S. Moncada, et al., Biochem. Pharmacol., (1989) 38: 1709-1715.
10. L.J. Ignarro, Pharmacol. & Toxicol., (1990) 67: 1-7
11. E.S. Bos, et al., J. Immunol., (1981) 2: 187-204.
12. NCCLS Evaluation Protocols, SC1, (1989) Villanova, PA: NCCLS.

LIMITED WARRANTY

Assay Designs, Inc. warrants that at the time of shipment this product is free from defects in materials and workmanship. This warranty is in lieu of any other warranty expressed or implied, including but not limited to, any implied warranty of merchantability or fitness for a particular purpose.

Assay Designs must be notified of any breach of this warranty within 48 hours of receipt of the product. No claim shall be honored if Assay Designs is not notified within this time period, or if the product has been stored in any way other than outlined in this publication. The sole and exclusive remedy of the customer for any liability based upon this warranty is limited to the replacement of the product, or refund of the invoice price of the goods.



For more details concerning the information within this kit insert, or to order any of Assay Designs' products, please call (734) 668-6113 between 8:30 a.m. and 5:30 p.m. EST. Orders or technical questions can also be transmitted by fax or e-mail 24 hours a day.

Material Safety Data Sheet (MSDS) available on our website or by fax.

**Assay Designs, Inc.
800 Technology Drive
Ann Arbor, MI 48108
U.S.A.**

**Telephone: (734) 668-6113
(800) 833-8651 (USA & Canada only)
Fax: (734) 668-2793
e-mail: info@assaydesigns.com
website: www.assaydesigns.com**

Simplify Your Science®

Part No. 25-0042

© 2000



March 22, 2006

